



ICP03-

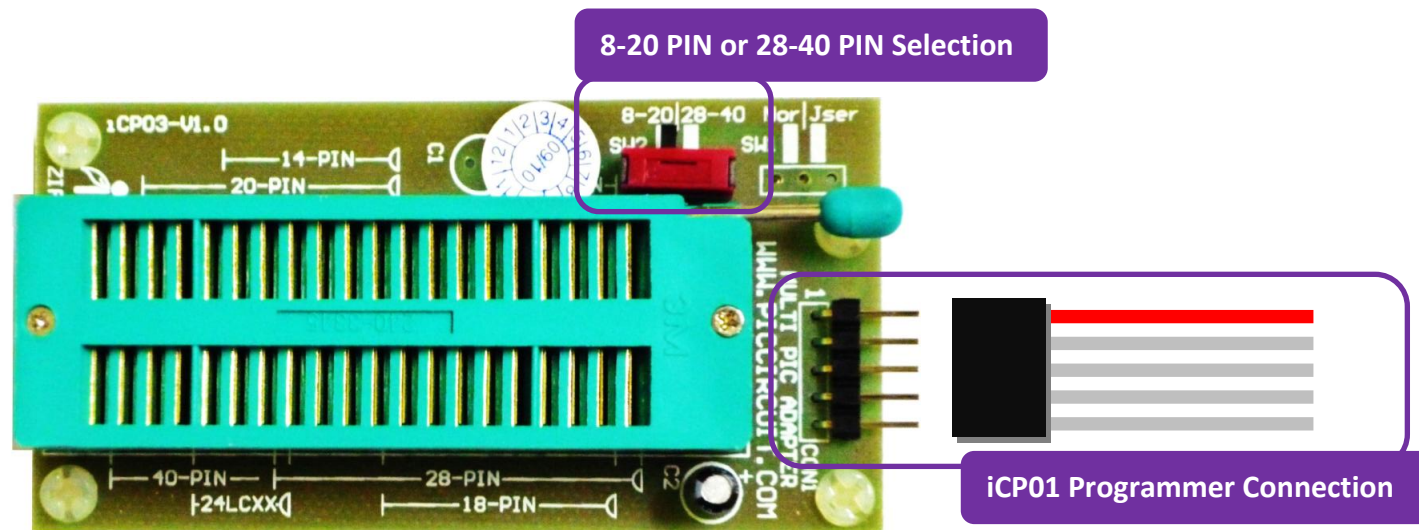
MULTI PIC

ADAPTER

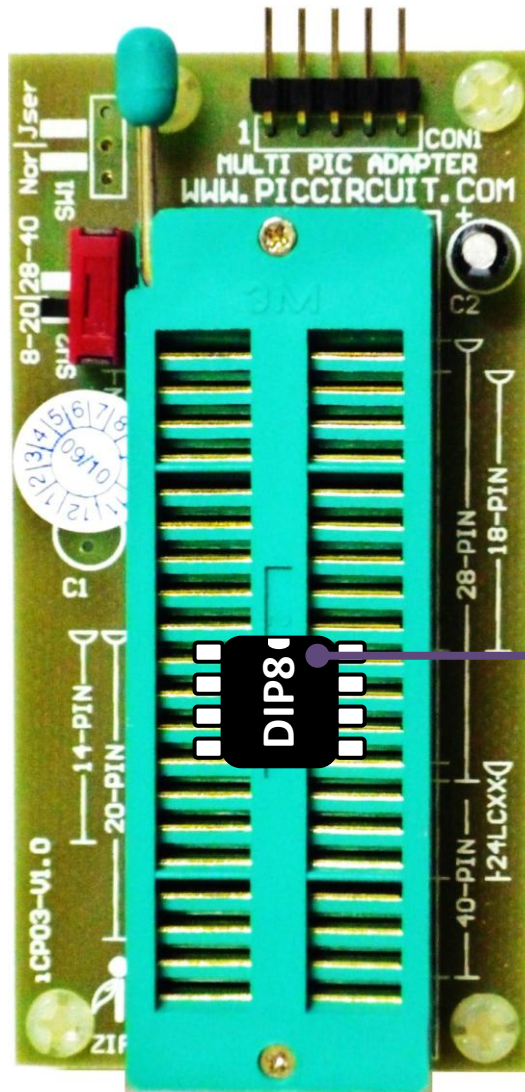
## 1. Introduction and overview

iCP03 offers a scalability for PIC programmer solution. The features of iCP03 are listed as followings.

- Low cost, high performance and user friendly device
- Every part is assembled perfectly and adapter is tested before submitting to users.
- Used for programming the popular Flash PIC MCU, includes PIC10F, PIC12F, PIC16F and PIC18F family
- No external power supply is required, direct power from programmer
- Small size (Dimension: 7.9cm X 4.0cm X 1.9cm), easy to carry and store
- Compatible with iCP01 – USB PIC Programmer

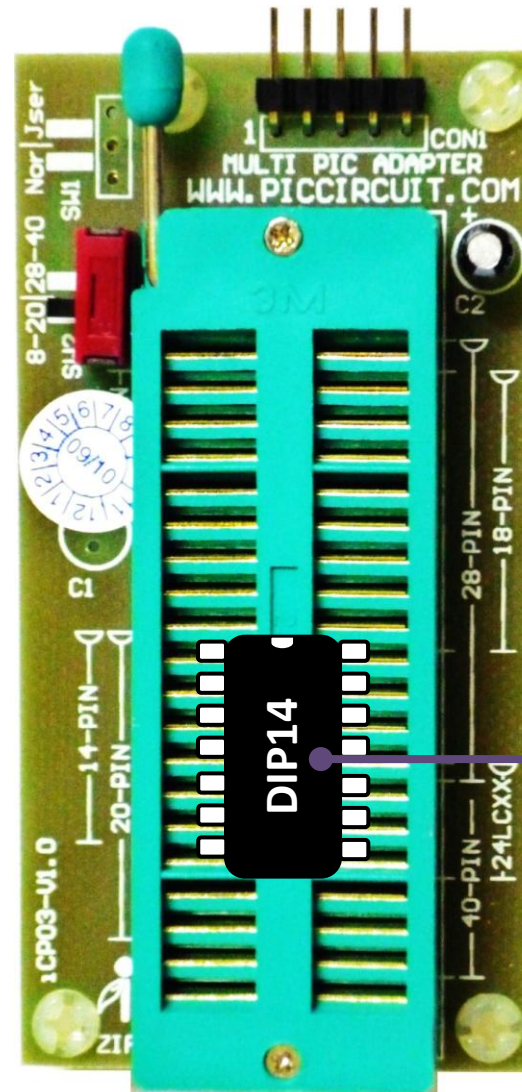


## 2. PIC Location



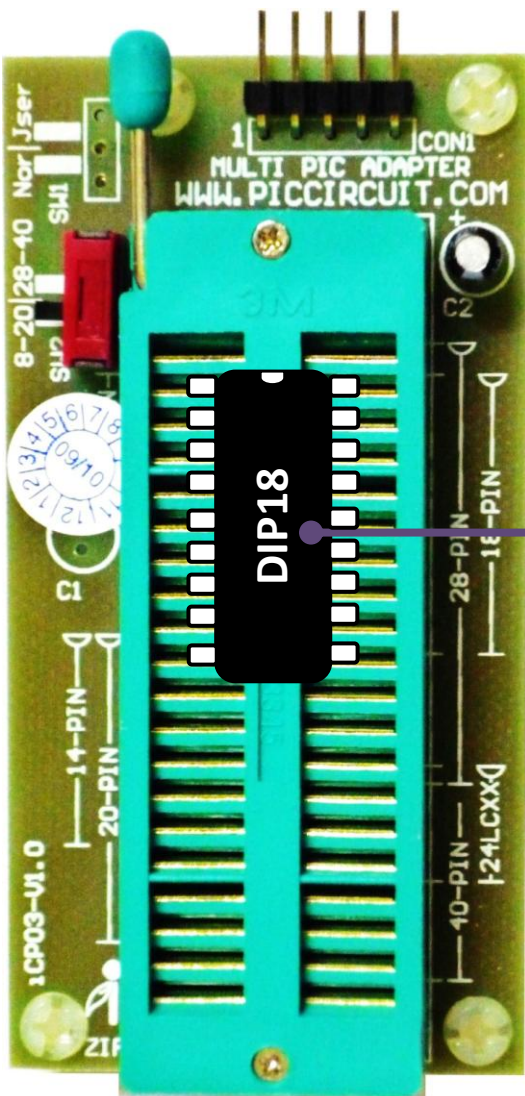
### DIP8

- PIC12F508
- PIC12F509
- PIC12F510
- PIC12F519
- PIC12F609
- PIC12F615
- PIC12F629
- PIC12F635
- PIC12F675
- PIC12F679
- PIC12F683



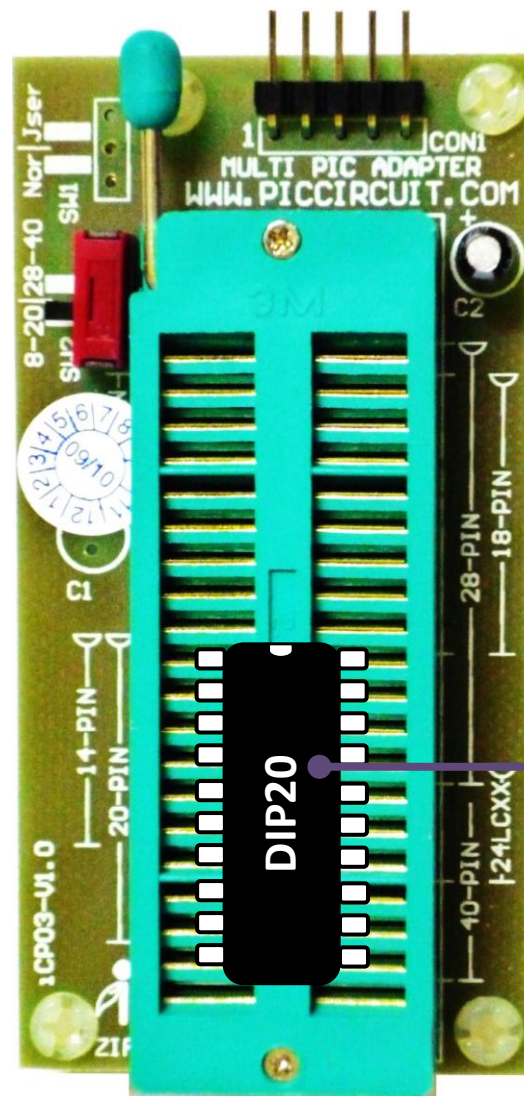
### DIP14

- PIC16F505
- PIC16F506
- PIC16F526
- PIC16F610
- PIC16F616
- PIC16F630
- PIC16F636
- PIC16F676
- PIC16F684
- PIC16F688



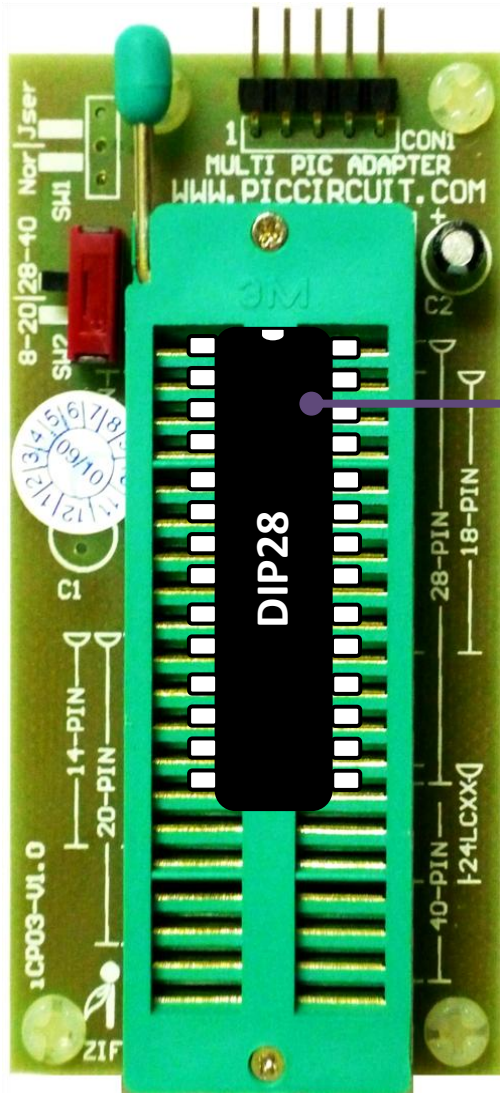
## DIP18

- PIC16F54
- PIC16F84A
- PIC16F87
- PIC16F88
- PIC16F627A
- PIC16F628A
- PIC16F648A
- PIC16F716
- PIC16F818
- PIC16F819
- PIC16F1826
- PIC16F1827
- PIC18F1320
- PIC18F1330
- PIC18F1220
- PIC18F1230



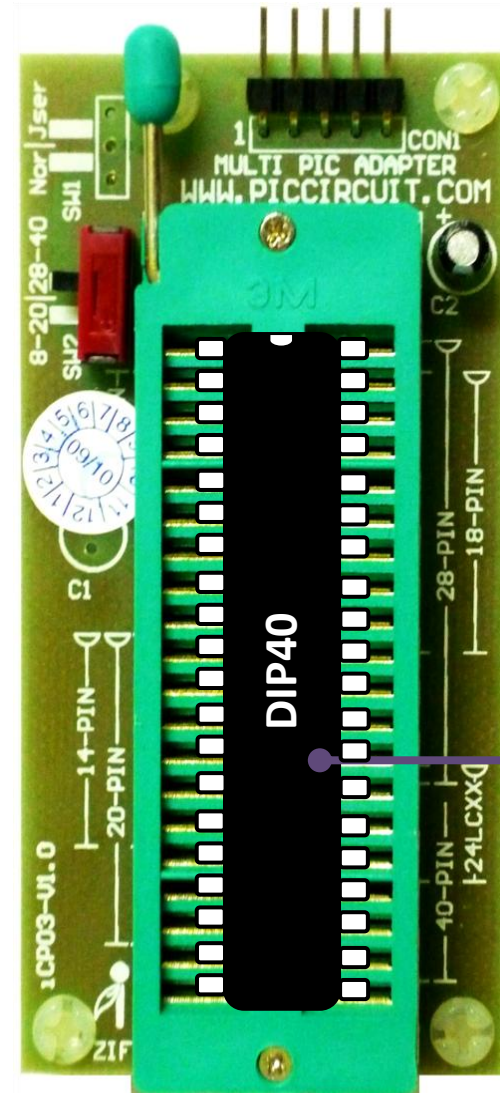
## DIP20

- PIC16F631
- PIC16F639
- PIC16F677
- PIC16F685
- PIC16F687
- PIC16F689
- PIC16F690
- PIC16F785



### DIP28

PIC16F72	
PIC16F73	PIC16F722
PIC16F723	PIC16F726
PIC16F737	PIC16F767
PIC16F870	PIC16F872
PIC16F873A	PIC16F882
PIC16F883	PIC16F886
PIC16F913	PIC16F916
PIC16F1933	PIC16F1936
PIC16F1938	PIC18F2220
PIC18F2221	PIC18F2320
PIC18F2321	PIC18F2331
PIC18F2410	PIC18F2420
PIC18F2423	PIC18F2431
PIC18F2450	PIC18F2455
PIC18F2458	PIC18F2480
PIC18F2510	PIC18F2515
PIC18F2520	PIC18F2523
PIC18F2525	PIC18F2550
PIC18F2553	PIC18F2580
PIC18F2585	PIC18F2610
PIC18F2620	PIC18F2680
PIC18F2682	PIC18F2685



### DIP40

PIC16F74	
PIC16F77	PIC16F1937
PIC16F727	PIC16F724
PIC16F747	PIC16F777
PIC16F871	PIC16F877A
PIC16F884	PIC16F887
PIC16F914	PIC16F917
PIC16F1939	PIC18F4220
PIC18F4221	PIC18F4320
PIC18F4321	PIC18F4331
PIC18F4410	PIC18F4420
PIC18F4423	PIC18F4431
PIC18F4450	PIC18F4455
PIC18F4458	PIC18F4480
PIC18F4510	PIC18F4515
PIC18F4520	PIC18F4523
PIC18F4525	PIC18F4550
PIC18F4553	PIC18F4580
PIC18F4585	PIC18F4610
PIC18F4620	PIC18F4680
PIC18F4682	PIC18F4685

## Disclaimer

*iCircuit Technologies* has an on going policy to improve the performance and reliability of their products; we therefore reserve the right to make changes without notice. The information contained in this data sheet is believed to be accurate however we do not assume any responsibility for errors or any liability arising from the application or use of any product or circuit described herein. This data sheet neither states nor implies warranty of any kind, including fitness for any particular application.

**Any liability from defect or malfunction is limited to the replacement of product ONLY, and does not include labour or other incurred corrective expenses.**

**Using or continuing to use these devices hereby binds the user to these terms.**

## CONTACT INFORMATION

For further information or technical assistance please contact:

Web: <http://www.piccircuit.com>

Email: [support@piccircuit.com](mailto:support@piccircuit.com)