

ICP06V1.1

- IBOARD MINI

1. Introduction and overview

iCP06 offers unprecedented level of performance, reliability and scalability for Microchip PIC IO Kit solution. By the same time, it allows users to program their hex code into the well-known 28-Pin Flash PIC MCU by using commonplace ICSP (In-Circuit Serial Programming) connection method. The features of iCP06 are listed as followings.

- Small size, easy interfacing, high performance and user friendly device
- Used for programming the 28-Pin **PIC16F722** or **PIC16F886** Flash PIC MCU
- Excellent flexibility that allows user to expand the board with plug and play modules

iBoard Features:

- **NCP1117** - provide **+5V or +3.3V** voltage supply to PIC Microcontroller
- **20MHz crystal** - allow PIC run at maximum speed
- **On/Off button** - power on off switch
- **Green LED** - power on indicator
- **Screw Terminal** - direct wiring connection (battery connection)
- **VS1 and VS2** - different input power supply (PIC supply and external module supply)
- **ICSP Connector** - on-board PIC programming

Supported iBoard Modules:

- **iCM01** - 4 x LEDs Module
- **iCM02** - 8 x LEDs Module
- **iCM03** - 7 Segment Display
- **iCM05** - Blank IO Board
- **iCM07A** - 4x3 Keypad
- **iCM07B** - 4x4 Keypad
- **iCM16** - L293D Driver
- **iCM17** - ULN2003A Driver
- **iCM19** - External LCD Port
- iBoard Extension Cable
- **2x16 LCD Display** (Yellow Backlight)
- **4x20 LCD Display** (Yellow Backlight)

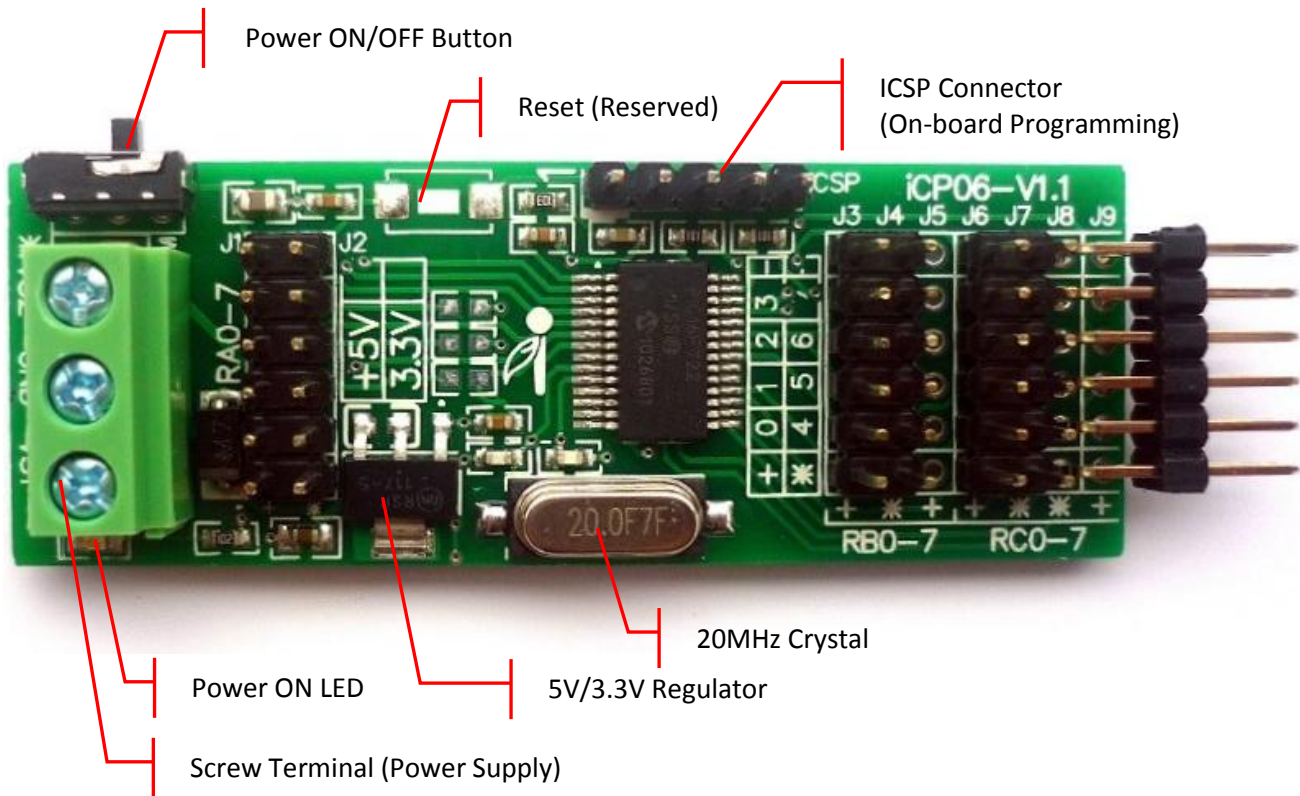
Peripheral Features:

- **IO Port** (VDD - IO1 - IO2 - IO3 - IO4 - GND) - 5 channels
- **IO Port** (VSS - IO1 - IO2 - IO3 - IO4 - GND) - 4 channels

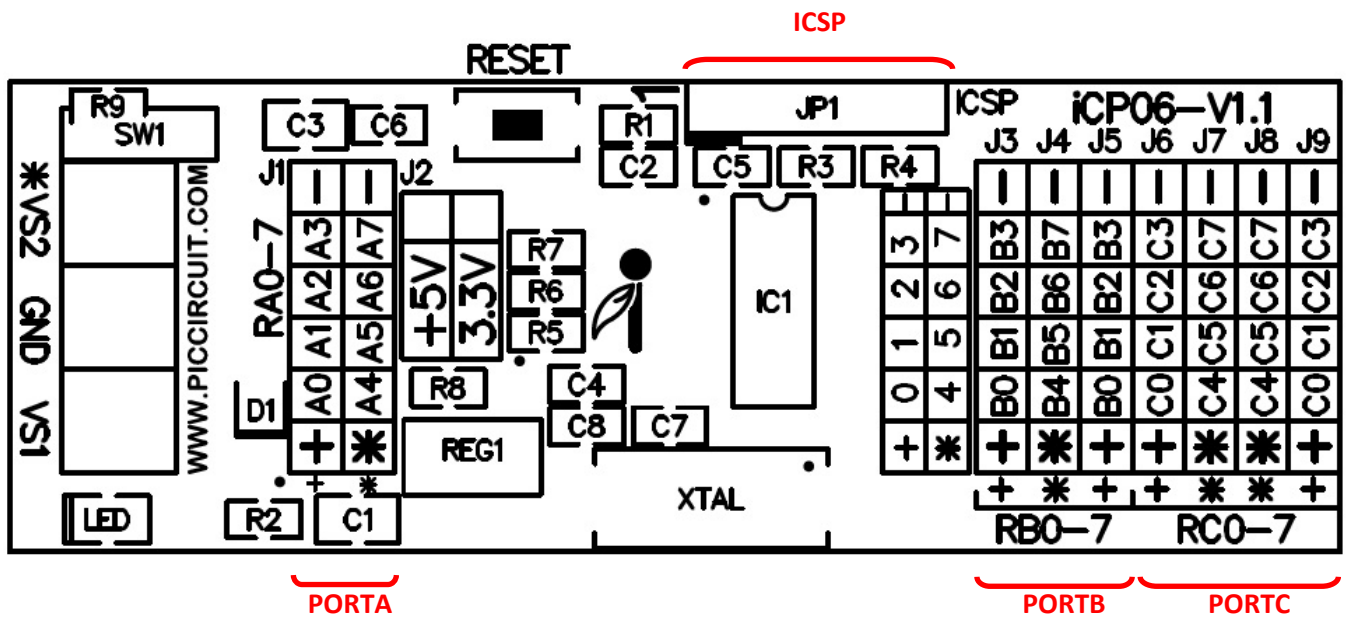
Dimension:

- Dimension: 6cm X 2.3cm X 1.1cm
- Standard 5x1 2.54mm Pin Socket for ICSP connection
- Standard 6x2 2.54mm Pin Socket for iBoard Module connection

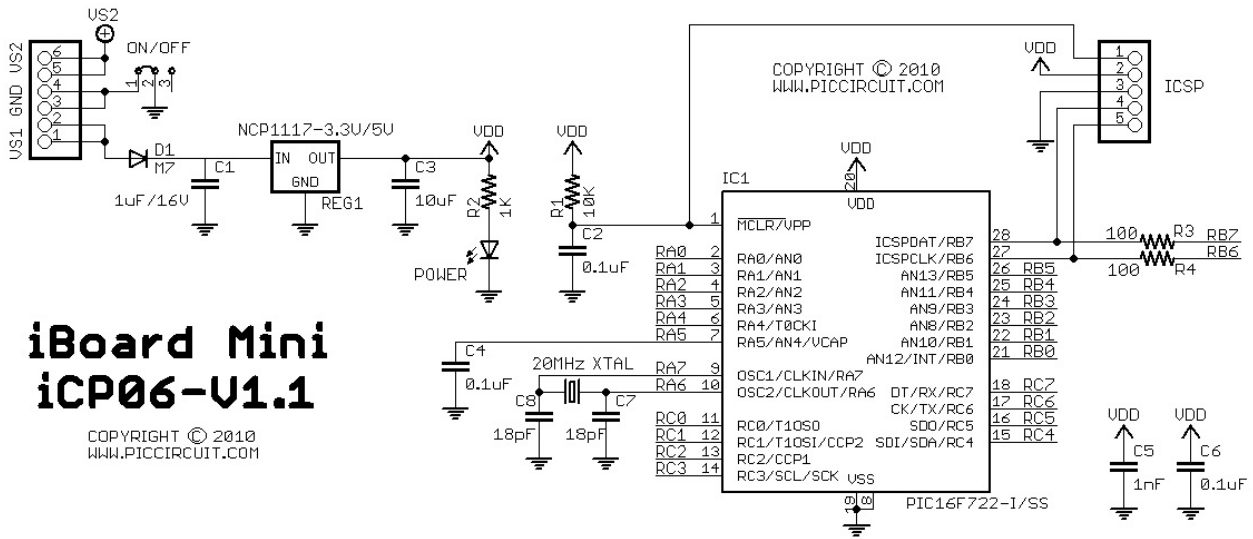
1.1 Layout



1.2 Layout Diagram

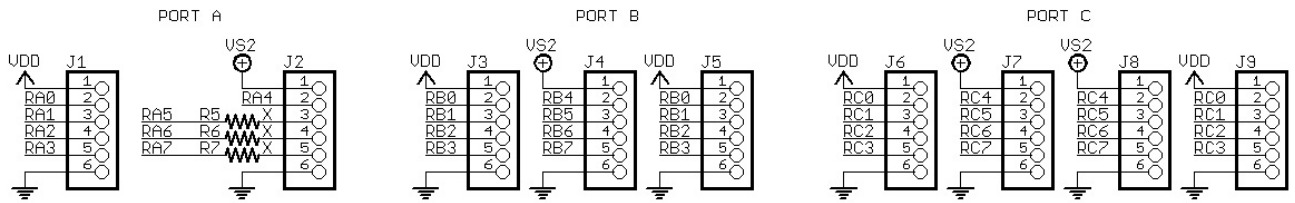


2. Schematic Diagram



**iBoard Mini
iCP06-U1.1**

COPYRIGHT © 2010
WWW.PICCIRCUIT.COM



3. Peripheral Connection

IO Port

Port	Pin 1	Pin 2	Pin 3	Pin 4	Pin 5	Pin 6	Description
J1	+	A0	A1	A2	A3	-	Digital I/O
J2	*	A4	-	-	-	-	Digital I/O
J3	+	B0	B1	B2	B3	-	Digital I/O
J4	*	B4	B5	B6	B7	-	Digital I/O
J5	+	B0	B1	B2	B3	-	Digital I/O
J6	+	C0	C1	C2	C3	-	Digital I/O
J7	*	C4	C5	C6	C7	-	Digital I/O
J8	*	C4	C5	C6	C7	-	Digital I/O
J9	+	C0	C1	C2	C3	-	Digital I/O

Analog Port

Port	Pin 1	Pin 2	Pin 3	Pin 4	Pin 5	Pin 6	Description
J1	+	A0/AN0	A1/AN1	A2/AN2	A3/AN3	-	Analog Input
J3/J5	+	B0/AN12	B1/AN10	B2/AN8	B3/AN9	-	Analog Input
J4	*	B4/AN11	B5/AN13			-	Analog Input

Communication Port

Port	Pin 1	Pin 2	Pin 3	Pin 4	Pin 5	Pin 6	Description
J7/J8	*			C6/TX	C7/RX	-	USART Port
J6/J9	+			C2/SS	C3/SCK	-	SPI Port
J7/J8	*	C4/SDI	C5/SDO			-	
J6/J9	+				C3/SCL	-	I2C Port
J7/J8	*	C4/SDA				-	

Motor Driver Port

Port	Pin 1	Pin 2	Pin 3	Pin 4	Pin 5	Pin 6	Description
J6/J9	+	C0	C1	C2	C3	-	Stepper Motor
J7/J8	*	C4	C5	C6	C7	-	
J6/J9	+	C0	C1/PWM2	C2/PWM1	C3	-	DC Motor
J7/J8	*	C4	C5			-	

Disclaimer

iCircuit Technologies has an ongoing policy to improve the performance and reliability of their products; we therefore reserve the right to make changes without notice. The information contained in this data sheet is believed to be accurate however we do not assume any responsibility for errors or any liability arising from the application or use of any product or circuit described herein. This data sheet neither states nor implies warranty of any kind, including fitness for any particular application.

Copyright Notice

The copyright in this document is owned by, *iCircuit Technologies*. No part of parts hereof may be reproduced, distributed, republished, displayed, broadcast, hyperlinked or transmitted in any manner or by any means or stored in an information retrieval system without the prior written permission of *iCircuit Technologies*.

Any liability from defect or malfunction is limited to the replacement of product ONLY, and does not include labour or other incurred corrective expenses.

Using or continuing to use these devices hereby binds the user to these terms.

CONTACT INFORMATION

For further information or technical assistance please contact:

Web: <http://www.piccircuit.com>

Email: support@piccircuit.com